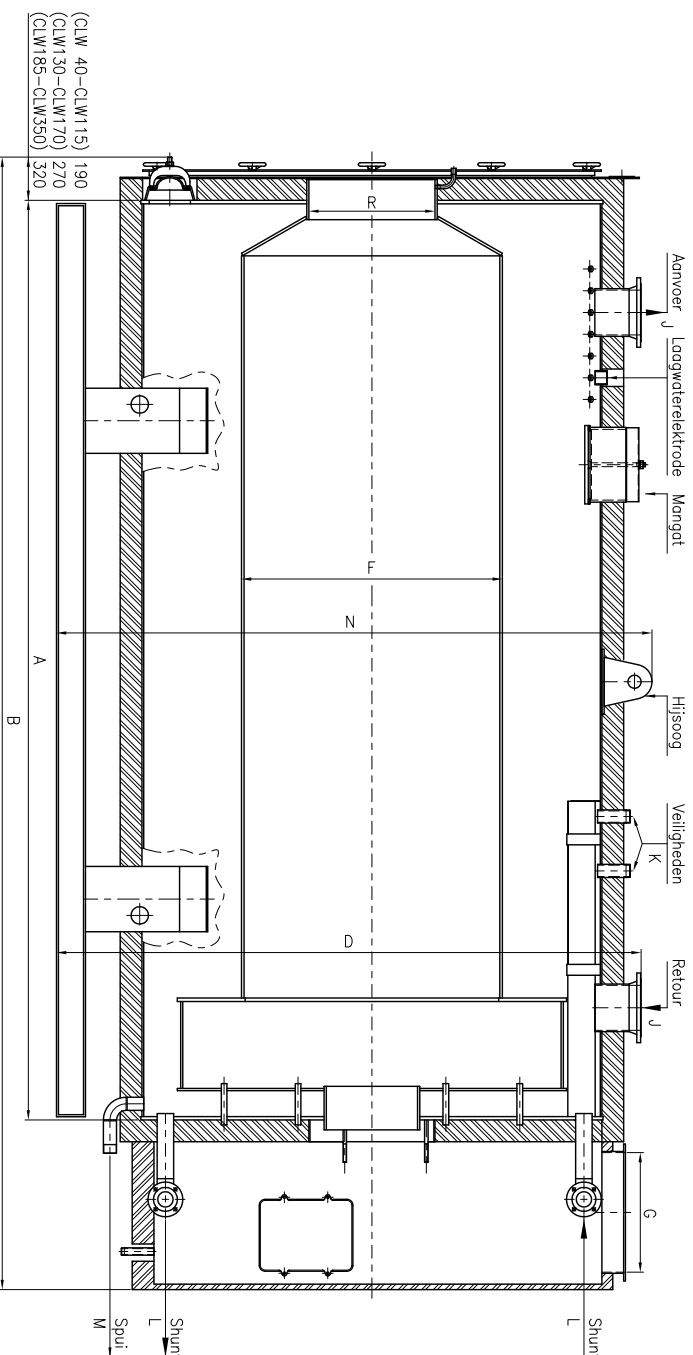
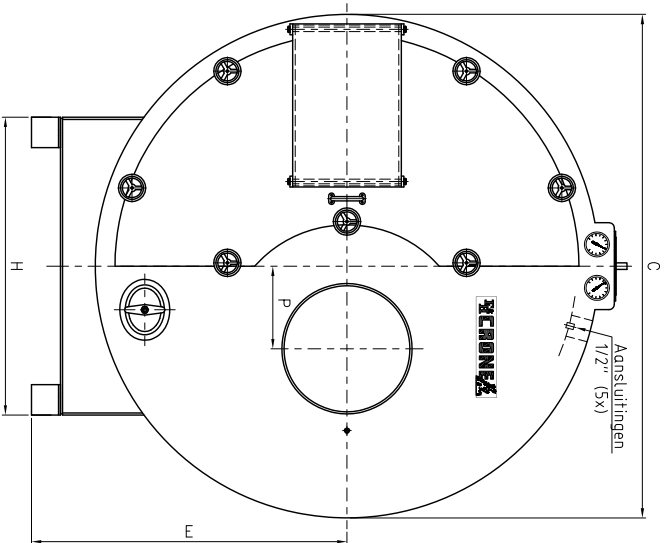
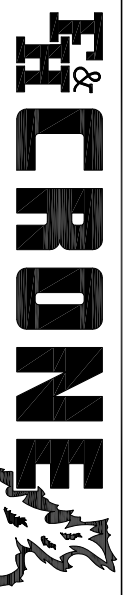


# KETTEL TYPE CLW



| Ketel Type | Capaciteit kw | Waterinh. Liter | Gewicht kg | V.O. m <sup>2</sup> | Rookgasz.veerst. mmwk | Rookgasz. Inh. m <sup>3</sup> | A    | B    | C    | D    | E    | F    | G    | H    | J   | K       | L   | M    | N    | P   | R   |
|------------|---------------|-----------------|------------|---------------------|-----------------------|-------------------------------|------|------|------|------|------|------|------|------|-----|---------|-----|------|------|-----|-----|
| CLW 40     | 960- 1200     | 3225            | 3510       | 40                  | 35-60                 | 2,2                           | 3425 | 4195 | 1650 | 2030 | 1125 | 800  | 300  | 1000 | 125 | 2x2"    | 50  | 2"   | 2093 | 265 | 420 |
| CLW 50     | 1200- 1500    | 3940            | 4070       | 50                  | 35-55                 | 2,6                           | 3425 | 4195 | 1800 | 2180 | 1200 | 880  | 350  | 1000 | 150 | 2x2"    | 50  | 2"   | 2243 | 285 | 420 |
| CLW 60     | 1500- 1800    | 5150            | 5135       | 60                  | 40-58                 | 3,5                           | 4230 | 4950 | 1850 | 2223 | 1218 | 900  | 400  | 1100 | 150 | 2x2"    | 65  | 2"   | 2286 | 310 | 420 |
| CLW 75     | 1800- 2400    | 5960            | 5870       | 75                  | 35-62                 | 4,4                           | 4230 | 5000 | 2000 | 2373 | 1293 | 1000 | 450  | 1100 | 150 | 2x2"    | 65  | 2"   | 2436 | 335 | 580 |
| CLW 95     | 2400- 3000    | 7060            | 7190       | 95                  | 38-60                 | 5,6                           | 4230 | 5050 | 2200 | 2573 | 1393 | 1150 | 500  | 1250 | 200 | 2x2"    | 65  | 2"   | 2636 | 360 | 580 |
| CLW115     | 3000- 3600    | 7830            | 8000       | 115                 | 38-55                 | 6,4                           | 4230 | 5100 | 2316 | 2689 | 1451 | 1200 | 550  | 1250 | 200 | 3x2"    | 65  | 2"   | 2752 | 380 | 580 |
| CLW130     | 3600- 4200    | 9950            | 9230       | 130                 | 50-68                 | 7,9                           | 5205 | 6205 | 2336 | 2728 | 1480 | 1200 | 600  | 1250 | 200 | 3x2"    | 80  | 2"   | 2791 | 380 | 580 |
| CLW145     | 4200- 4800    | 11275           | 10000      | 145                 | 50-65                 | 8,6                           | 5205 | 6255 | 2456 | 2848 | 1540 | 1250 | 650  | 1500 | 200 | 3x2"    | 80  | 2"   | 2911 | 400 | 580 |
| CLW155     | 4800- 5400    | 11350           | 10610      | 155                 | 60-76                 | 9,8                           | 5205 | 6305 | 2526 | 2918 | 1575 | 1350 | 700  | 1500 | 250 | 4x2"    | 80  | 2"   | 2981 | 400 | 580 |
| CLW170     | 5400- 6000    | 11830           | 11970      | 170                 | 60-75                 | 10,6                          | 5205 | 6305 | 2600 | 2992 | 1612 | 1400 | 700  | 1500 | 250 | 4x2"    | 80  | 2"   | 3055 | 400 | 700 |
| CLW185     | 6000- 6600    | 12850           | 12860      | 185                 | 65-80                 | 12,0                          | 5480 | 6630 | 2660 | 3052 | 1642 | 1450 | 700  | 1500 | 250 | 4x2"    | 100 | 2"   | 3115 | 400 | 700 |
| CLW200     | 6600- 7200    | 13460           | 13540      | 200                 | 68-80                 | 12,8                          | 5480 | 6680 | 2730 | 3122 | 1677 | 1500 | 750  | 1700 | 250 | 2xDN080 | 100 | 2"   | 3185 | 400 | 700 |
| CLW220     | 7200- 8400    | 15360           | 15400      | 220                 | 65-90                 | 15,5                          | 5890 | 7140 | 2840 | 3251 | 1751 | 1600 | 800  | 1700 | 250 | 2xDN100 | 100 | 2,5" | 3314 | 470 | 830 |
| CLW250     | 8400- 9600    | 15990           | 16710      | 250                 | 75-98                 | 17,1                          | 6330 | 7630 | 2840 | 3251 | 1751 | 1600 | 850  | 1700 | 250 | 2xDN100 | 100 | 2,5" | 3314 | 470 | 830 |
| CLW275     | 9600-10800    | 18775           | 18570      | 275                 | 75-98                 | 18,4                          | 6330 | 7680 | 3000 | 3411 | 1831 | 1650 | 900  | 1900 | 300 | 2xDN100 | 125 | 2,5" | 3474 | 500 | 830 |
| CLW300     | 10800-12000   | 20375           | 20000      | 300                 | 90-110                | 20,2                          | 6900 | 8350 | 3000 | 3411 | 1831 | 1650 | 1000 | 1900 | 300 | 2xDN100 | 125 | 2,5" | 3474 | 500 | 830 |
| CLW350     | 12000-14000   | 23970           | 22310      | 350                 | 100-120               | 22,3                          | 6900 | 8350 | 3190 | 3601 | 1426 | 1700 | 1000 | 2100 | 300 | 2xDN125 | 125 | 2,5" | 3664 | 0   | 830 |



-Flensaansluiting t/m DN200 vlg. DIN2631 daarboven vlg. DIN2632  
 -Flensaansluiting veiligheden vlg. DIN2633  
 -Alle uitvoeringen hebben een lassoek van 2" voor de laagwaterelektrode.  
 -Twee hijsocgen bij export of vanaf type CLW130

-Wijzigingen voorbehouden 01-2014

Grote Esch 400  
 2841 MJ Moordrecht (NL)

Tel. +31(0)182 614482  
 fax +31(0)182 633257

e-mail : info@fchrone.nl  
 website : www.fchrone.eu